

Ex-T BANNER STANDS



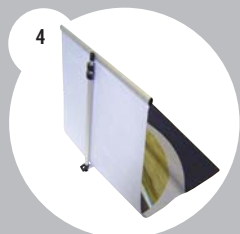
Fold the pole out and flip it over until it locks into position.



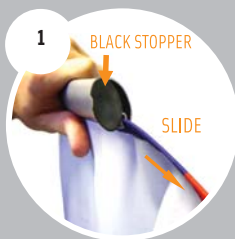
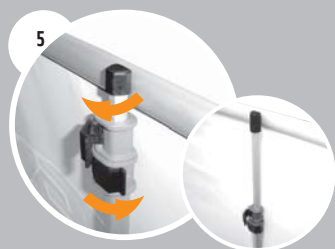
Unroll the image completely.



Hook the top bar onto the pole.



Open the clips and extend the telescopic pole to the desired height. Close clips to lock in place.

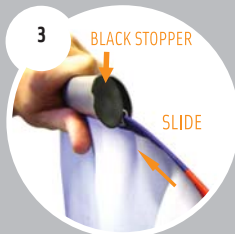


With the image unrolled and not attached to pole, unclip one of the black stoppers on the end of the roller and slide out the image.



Slide the image out of the base.

Slide the new image into the base.



Slide the new image into the top bar and close the black stopper.



| X - LARGE | LARGE | MEDIUM | SMALL |
|-----------------------|-----------------------|------------------------|-----------------------|
| ▲ Var - 2.5 m (8' 2") | ▲ var - 2.2 m (7' 3") | ▲ var - 2.1 m (6' 11") | ▲ Var - 2.0 m (6' 8") |
| ▶ 1.5 m (4' 11") | ▶ 1.2 m (3' 11") | ▶ 1 m (3' 3") | ▶ 0.85 m (2' 10") |
| ■ 3 kg (6.6 lb) | ■ 2.7 kg (6.0 lb) | ■ 2.6 kg (5.7 lb) | ■ 2.46 kg (5.4 lb) |

The Ex-T is a non-mechanised roll-up banner perfect for indoor branding requirements. The attached telescopic pole and a unique fold-away system mean there are no loose parts! The image is easily interchangeable offering increased value for money.

